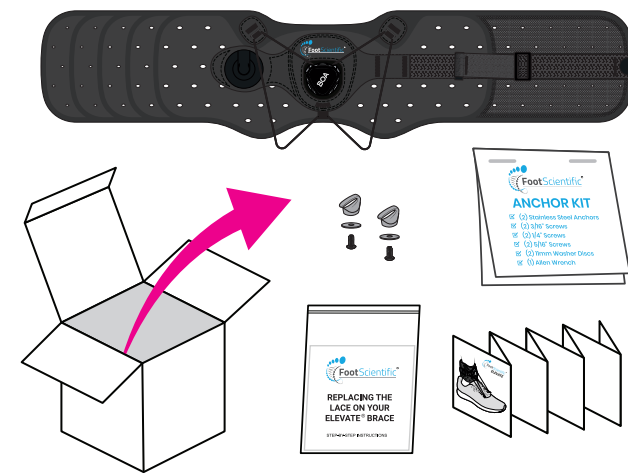
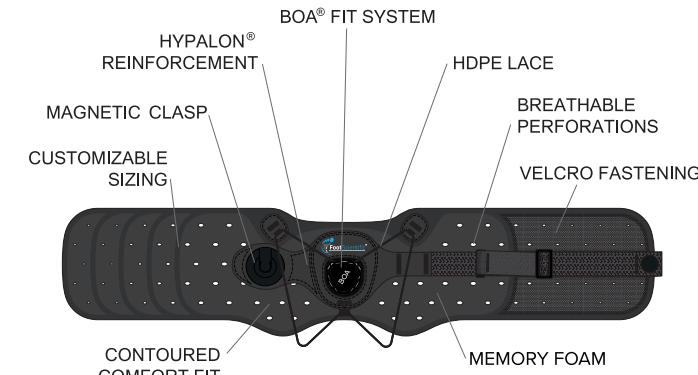


FootScientific
ELEVATE
MEMORY FOAM

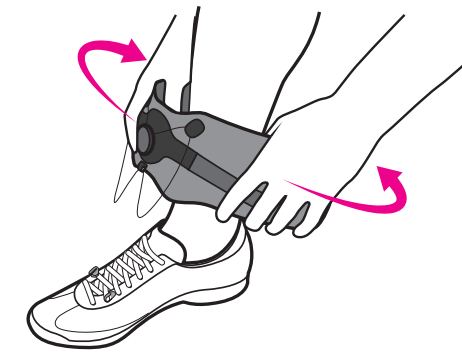
WHAT'S IN THE BOX



1 PARTS OF THE BRACE

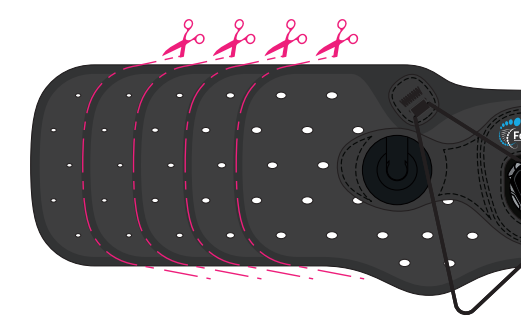


2 ORIENT THE BRACE



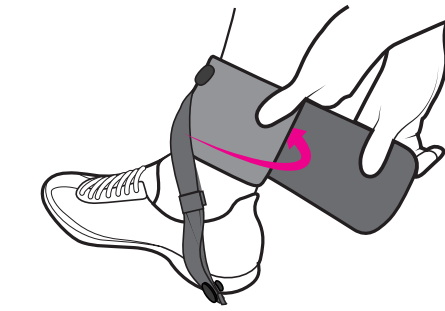
- Place the Boa® center to your foot or shoe.
- Wrap brace around ankle to test for fit.

3 TRIM THE BRACE



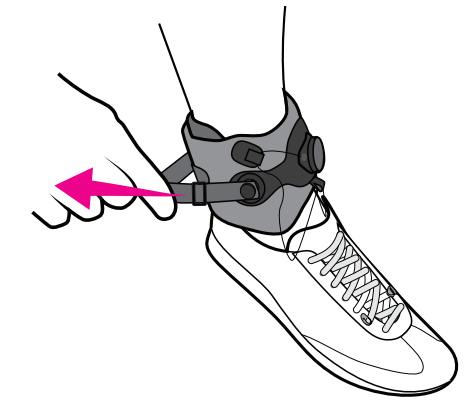
- Trim brace if needed.
(note: make sure not to cut sewn areas)

4 SECURE VELCRO



- Place the Boa® center to your foot or shoe again.
- Wrap brace tightly around ankle.
- Place the left side first against your leg, then follow with right to secure velcro

5 CONNECT THE BUCKLE



- With velcro secure, connect magnetic fastener in place.
- Adjust strap length as necessary.

FOLD LINE

FOLD LINE

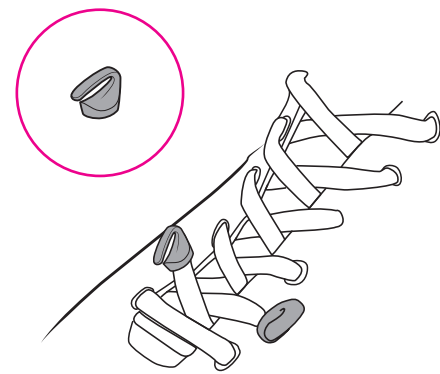
FOLD LINE

FOLD LINE

FOLD LINE

FOLD LINE

6 ATTACH ANCHORS



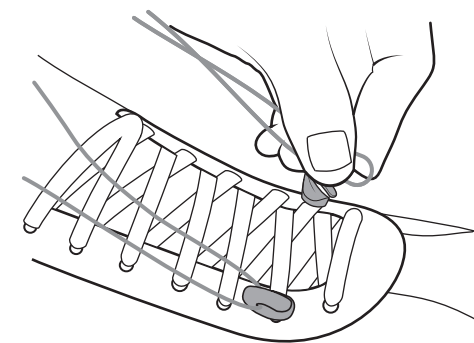
- See the included Anchor Kit package for instructions on proper installation and use.

7 RELEASE BOA®



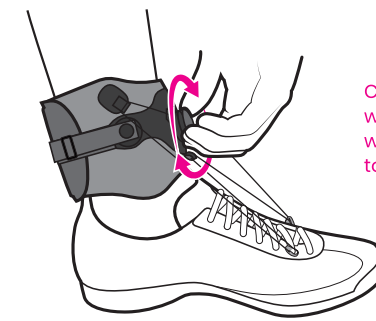
- Pull the face of the Boa® away from you.

8 ATTACH LACE



- With the Boa® outward, hold onto the lace and pull toward Anchors.
- Slip the cord into the Anchor openings.

9 WIND THE BOA®



Care: To avoid premature wear to the Boa® cord, clean with damp rag after exposure to dirt/grit.

- Push the Boa® inward until it clicks.
- Wind the Boa® clockwise until the lace is tight and you have the lift and angle desired.

(It can be helpful while adjusting the tension to bend your shin toward your toes)

10 ADJUST AS NEEDED



Wear with socks for additional comfort or if you are concerned about skin sensitivity to hook and loop material.

- If you feel pressure anywhere, make adjustments in the fit and height position of the brace around your ankle.

11 SEE THE VIDEOS

Visit our website to see instructional videos including how to punch new eyelets

www.footscientific.com

Consult your doctor concerning your condition and the use of this device.

12 ORDER ADDITIONAL PARTS

FootScientific

76 W. 13775 S. #4, Draper, UT 84020

801-666-6468

www.footscientific.com

Hypalon® is a registered trademark of E.I. du Pont de Nemours and Company.
Boa® is a registered trademark of Boa Technology Inc.
Spectra® is a registered trademark of Honeywell International Inc.

